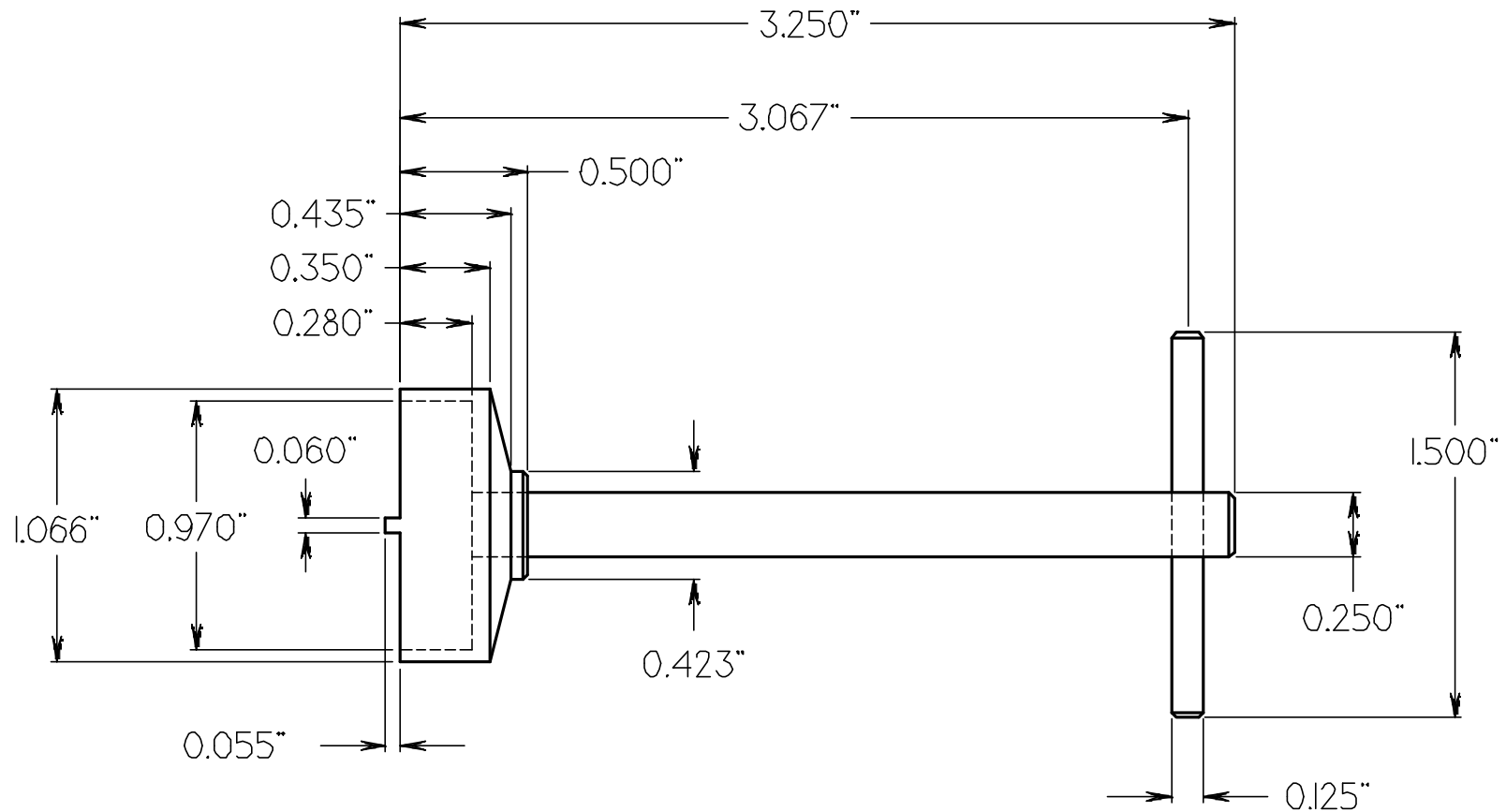


# The Special Retina Wrench



Suggested material: Brass w/ stainless steel cross handle.  
Use dividing head or rotary table to insure prongs are 180 degrees apart.  
Shaft is a press-fit to wrench head- use Loctite if necessary.  
Cross handle is press-fit into shaft- as above.  
Do not increase cross handle length as applied torque should be low.  
Taper and step not critical but are needed to make use of wrench easier.